

36-1894: Monoclonal Antibody to CD20 / MS4A1 (B-Cell Marker)(L26 + IGEL/773)

Clonality :	Monoclonal
Clone Name :	L26 + IGEL/773
Application :	FACS,IF,IHC
Reactivity :	Human
Gene :	MS4A1
Gene ID :	931
Uniprot ID :	P11836
Format :	Purified
Alternative Name :	MS4A1,CD20
Isotype :	Mouse IgG2a, kappa + Mouse IgG2a, kappa
Immunogen Information :	Human tonsil B cells (L26); Recombinant human MS4A1 protein (IGEL/773)

Description

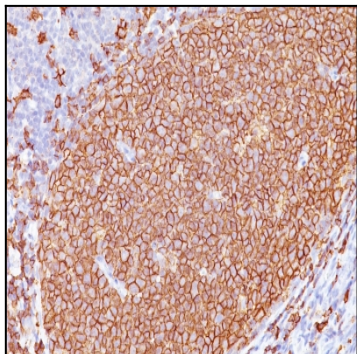
Recognizes a protein of 30-33kDa, which is identified as CD20. Its epitope is located in the cytoplasmic domain of CD20 and was, therefore, ascribed as CD20cy in the 5th Workshop. CD20 is a non-Ig differentiation antigen of B-cells and its expression is restricted to normal and neoplastic B-cells, being absent from all other leukocytes and tissues. CD20 is expressed by pre B-cells and persists during all stages of B-cell maturation but is lost upon terminal differentiation into plasma cells. This MAb can be used for immunophenotyping of leukemia and malignant cells, B lymphocyte detection in peripheral blood and B cell localization in tissues. It reacts with the majority of B-cells present in peripheral blood and lymphoid tissues and their derived lymphomas. In lymphoid tissue, germinal center blasts and B-immunoblasts are particularly reactive. It is a reliable antibody for ascribing a B-cell phenotype in known lymphoid tissues. Rarely, CD20-positive T-cell lymphomas have been reported. Reactivity has also been noted with Reed-Sternberg cells in cases of Hodgkin's disease, particularly of lymphocyte predominant type.

Product Info

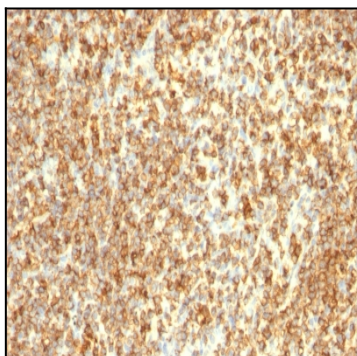
Amount :	100 µg
Purification :	Affinity Chromatography
Content :	100 µg in 500 µl PBS containing 0.05% BSA and 0.05% sodium azide. Sodium azide is highly toxic.
Storage condition :	Store the antibody at 4°C; stable for 6 months. For long-term storage; store at -20°C. Avoid repeated freeze and thaw cycles.

Application Note

Flow Cytometry (5-10ul/million cells); ,Immunofluorescence (1:50-1:100); ,Immunohistochemistry (Formalin-fixed) (1:100-1:200 for 30 minutes at RT) ,(Staining of formalin-fixed tissues requires heating tissue sections in 10mM Tris with 1mM EDTA, pH 9.0, for 45 min at 95°C followed by cooling at RT for 20 minutes);



Formalin-fixed, paraffin-embedded human Tonsil stained with CD20 Monoclonal Antibody (L26 + IGEL/773)



Formalin-fixed, paraffin-embedded human Lymphoma stained with CD20 Monoclonal Antibody (L26 + IGEL/773)