

## 10-3004-P: Monoclonal Antibody to TLR3 (Clone: ABM15D5)-PE conjugated

|                         |   |
|-------------------------|---|
| Clonality :             | Monoclonal  |
| Clone Name :            | ABM15D5   |
| Application :           | FACS  |
| Reactivity :            | Human   |
| Conjugate :             | PE  |
| Gene :                  | TLR3  |
| Gene ID :               | 7098  |
| Uniprot ID :            | O15455  |
| Format :                | Purified  |
| Alternative Name :      | TLR3  |
| Isotype :               | Mouse IgG1 Kappa  |
| Immunogen Information : | A partial length recombinant TLR3 protein (amino acids 25-370) was used as the immunogen for this antibody. |

### Description

TLR3 (Toll-Like Receptor-3) acts as a major receptor in virus-mediated innate immune response. This protein belongs to TLR (Toll-like receptor) family which comprises of 10-12 type I integral membrane receptor paralogs that recognize pathogen associated molecular signatures and initiate inflammatory responses. TLR3 consist of pathogen-binding ECD (Ectodomains) and cytoplasmic signaling domains, known as TIR (Toll IL-1 Receptor) domains, joined by a single transmembrane helix. TLR3 specifically senses dsRNA (Double-stranded RNA), an almost universal viral intermediate generated during most viral replications. TLR-3 activation induces multiple cellular antiviral responses, including production of IFN-alpha/beta and up-regulation of the anti-HIV cellular factor APOBEC3G. These are a family of pattern recognition receptors expressed by immune cells, including macrophages.

### Product Info

|                     |   |
|---------------------|---|
| Amount :            | 25 µg / 100 Test                                |
| Purification :      | Protein G Chromatography                        |
| Content :           | 0.04mg/ml in PBS with 0.05% Azide.              |
| Storage condition : | Store the antibody at 4°C, stable for 6 months. |

### Application Note

FACS analysis: 0.5-1 µg/10<sup>6</sup> cells

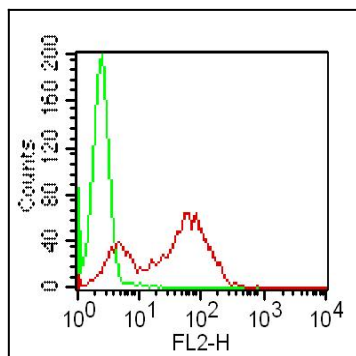


Fig-1: Intracellular flow analysis of TLR3 PE conjugated in human PBMC (lymphocytes) using 0.5  $\mu\text{g}/10^6$  cells of TLR3 PE conjugated antibody (Clone: ABM15D5). Green represents isotype control; red represents anti-TLR3 PE conjugated antibody.