

## 11-3036: Polyclonal Antibody to m TLR9

<b>Clonality :</b>	Polyclonal
<b>Application :</b>	WB
<b>Reactivity :</b>	Mouse
<b>Gene :</b>	Tlr9
<b>Gene ID :</b>	81897
<b>Uniprot ID :</b>	Q9EQU3
<b>Format :</b>	Purified
<b>Alternative Name :</b>	Toll-like receptor 9, CD289
<b>Isotype :</b>	Rabbit IgG
<b>Immunogen Information :</b>	A partial length recombinant m TLR9 protein (amino acids 200-450) was used as the immunogen for this antibody.

### Product Info

<b>Amount :</b>	25 µg / 100 µg
<b>Purification :</b>	Protein A Chromatography
<b>Content :</b>	25 µg in 50 µl/100 µg in 200 µl PBS containing 0.05% BSA and 0.05% sodium azide. Sodium azide is highly toxic.
<b>Storage condition :</b>	Store the antibody at 4°C, stable for 6 months. For long-term storage, store at -20°C. Avoid repeated freeze and thaw cycles.

### Application Note

Western blot analysis: 1-2 µg/ml

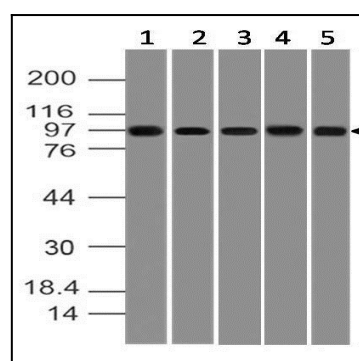


Figure-1: Western blot analysis of mTLR9. Anti- mTLR9 antibody (11-3036) was used at 2 µg/ml on (1) m Thymus, (2) m Spleen, (3) m Testis, (4) m Liver and (5) m Stomach lysates.