

## 16-1002: Quick-blots (Rat Tissues)

**Application :** WB

**Reactivity :** Rat

### Description

Quick-blots™ is Ready-to-use PVDF membrane with 11 Rat tissue lysates (20 µg total protein per lane). Quick-blots™ is a very simple method to identify different proteins from rat tissues.

### Product Info

**Amount :** 1 Membrane  
**Content :** 1 pre-transferred membrane  
**Storage condition :** Store unopened at RT. For long-term, store at 4°C.

### Application Note

#### Protocol:

1. Activate the membrane with Methanol for 1-2 min and then wash the blots with TBST (25 mM Tris-Cl, pH 8.0; 125 mM NaCl; 0.1% Tween 20) buffer thrice to get rid of extra methanol.
2. Block the membrane for 1 hour in 5% skimmed milk (in TBST) to avoid non specific binding of antibodies.
3. Wash the membranes 2 times in TBST and incubate with primary antibodies prepared in 1% skimmed milk for 2 hr in RT/ over night at 4°
- C.
4. After primary incubation, wash the membranes for 1 hour in TBST at RT. (Buffer should be changed in 30 min interval)
5. Incubate the membranes in appropriate Secondary antibody for 1 hour.
6. After secondary incubation, wash the membranes for 2 hours (Buffer should be changed in 30 min interval). Then develop the blots with Chemiluminescent Substrate and interpret the results in photographic film.

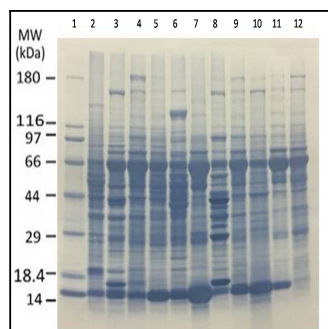


Fig-1: Quick-blots™ of rat tissue (Cat No.: 16-1002): Different Rat tissue Lysates around 20 µg per lane were resolved by SDS-PAGE, trasfered on to PVDF membrane and stained with amido black. Lanes: 1. Molecular weight marker, 2. Brain, 3. Heart, 4. Small Intestine, 5. Kidney, 6. Liver, 7. Lung, 8. Skeletal Muscle, 9. Stomach, 10. Spleen, 11. Ovary, 12. Testis.