

10-4013: Monoclonal Antibody to Dectin-2 (Clone: ABM2H28)

| | |
|--------------------------------|---|
| Clonality : | Monoclonal |
| Clone Name : | ABM2H28 |
| Application : | IHC,FACS,WB |
| Reactivity : | Mouse,Human |
| Gene : | CLEC6A |
| Gene ID : | 93978 |
| Uniprot ID : | Q6EIG7 |
| Format : | Purified |
| Alternative Name : | CLEC6A,CLECSF10,DECTIN2 |
| Isotype : | Mouse IgG2a Kappa |
| Immunogen Information : | A partial length recombinant Dectin-2 protein (amino acids 70-230) was used as the immunogen for this antibody. |

Description

Dectin-2 (C-type lectin domain family 6 member A) is a type II membrane receptor with an extracellular C-type lectin-like domain fold. Dectin-2 plays an important role in the host defense against *C. albicans* infection by inducing TH17 cell differentiation. It binds high-mannose carbohydrates in a Ca(2+)-dependent manner. In Dectin-2 glycosylation occurs at Asn131, Asn170. Dectin-2 has 2 isoforms produced by alternative splicing. Dectin-2 is strongly expressed in monocytes and weakly in B-cells and also expressed in spleen, tonsils, lymph node, lungs, leukocytes, dendritic cells and bone marrow.

Product Info

| | |
|----------------------------|---|
| Amount : | 25 µg / 100 µg |
| Purification : | Protein G Chromatography |
| Content : | 25 µg in 50 µl/100 µg in 200 µl PBS containing 0.05% BSA and 0.05% sodium azide. Sodium azide is highly toxic. |
| Storage condition : | Store the antibody at 4°C, stable for 6 months. For long-term storage, store at -20°C. Avoid repeated freeze and thaw cycles. |

Application Note

Western blot analysis: 2-4 µg/ml, FACS analysis: 0.5 µg/10⁶ cells, Immunohistochemical analysis: 5 µg/ml

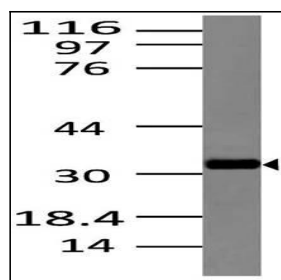


Fig-1: Western blot analysis of Dectin 2 Anti- Dectin 2 antibody (Clone: ABM2H28) was used at 2 µg/ml on Raw lysate.

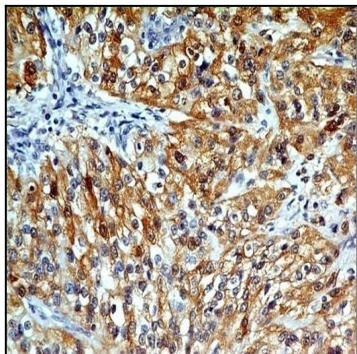


Fig-2 : Immunohistochemical analysis of Dectin-2 in Renal Cell Carcinoma using Dectin-2 antibody (Clone: ABM2H28) at 5 µg/ml.

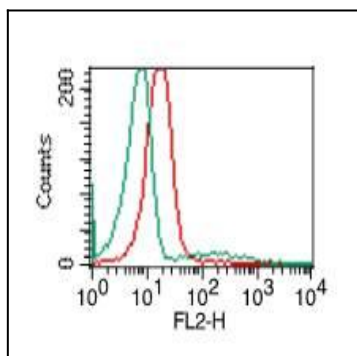


Fig-3: Intracellular flow analysis of Dectin-2 in human PBMC (Lymphocytes) using 0.5 µg/10⁶ cells of Dectin-2 antibody (Clone: ABM2H28). Green represents isotype control; red represents anti-Dectin-2 antibody. Goat anti-mouse PE conjugate was used as secondary.